



# Welcome to The Grove

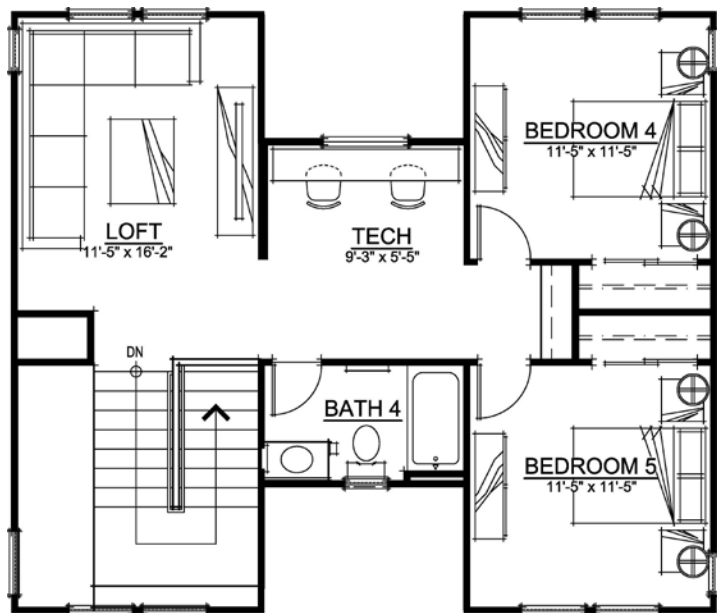
**Plan 1 - Approximately 2,797 square feet**  
**5 bedrooms, 4-1/2 baths and Three Car Garage - Two Story**



**Ranch Style: Residences 1 and 6**



**Modern Style: Residence 3**



This wonderful, brand-new home offers the complete package: luxury, modern amenities and a convenient location. The owner's suite and two additional suites grace the entry level. The kitchen features a large central island situated adjacent to a spacious dining area, all opening into the family room, providing a large comfortable space for social gatherings. A centrally located powder room and laundry round out the entry level. Upstairs is a spacious loft area and tech space, perfect for students or remote work. Two additional bedrooms that share a bath afford very private quarters for family or friends.

Edenbridge Homes  
 Represented exclusively by  
 Glenmere Properties, Inc.  
 21771 Stevens Creek Blvd., Ste. 200A  
 Cupertino, CA 95014  
 DRE 01518532  
[www.edenbridgehomes.com](http://www.edenbridgehomes.com)

Equal Housing Opportunity  
 Contact: Diane Downend (DRE 01707018)  
 650-766-1502 [diane@edenbridgehomes.com](mailto:diane@edenbridgehomes.com)